

# COX

COMMERCIAL WARM AIR FURNACES



*Keeping families warm for over 60 years*

**BOYERTOWN FURNACE COMPANY**

# COX

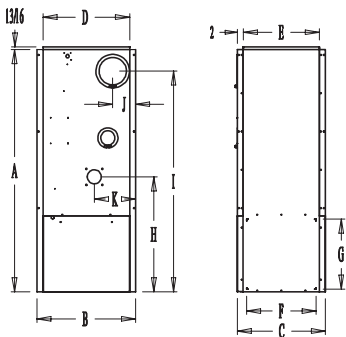
COMMERCIAL WARM AIR FURNACES

10 Year Heat Exchanger Warranty      11 Gauge Heat Exchanger      Beckett Burners  
 Double Wall Steel Casing      Front or Rear Flue Available      Pre-Cast Refractory Chamber  
 Highboy, Horizontal and Lowboy Configurations

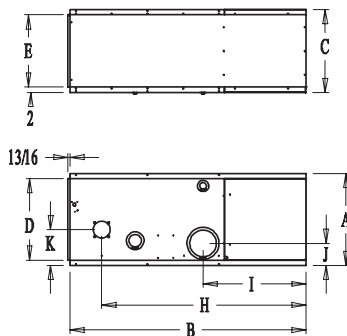
## Furnace Specifications

	HO 225	HO 300	HO 400	SO 225	SO 300	SO 400	LO 225	LO 300	
Cabinet Height	A	80 - 1/4	86 - 1/4	104 - 1/4	32 - 3/4	34 - 3/4	42 - 3/4	56 - 1/8	59 - 3/8
Cabinet Width	B	32 - 3/4	34 - 3/4	42 - 3/4	83 - 3/4	89	106	32 - 3/4	34 - 3/4
Cabinet Depth	C	29 - 5/16	31 - 5/16	39 - 9/16	29 - 5/16	31 - 5/16	39 - 9/16	58	60
Warm Air Supply Width	D	28 - 3/4	30 - 3/4	38 - 3/4	28 - 3/4	30 - 3/4	38 - 3/4	28 - 3/4	30 - 3/4
Warm Air Supply Depth	E	25 - 5/16	27 - 5/16	35 - 9/16	25 - 5/16	27 - 5/16	35 - 9/16	25 - 3/16	27 - 5/16
Return Air Supply Width	F	23 - 1/16	25 - 1/16	33 - 1/16	23	25	33	28 - 3/4	30 - 3/4
Return Air Supply Height	G	23 - 1/4	26	30 - 15/16	23	25	33	23 - 15/16	23 - 15/16
Centerline Burner	H	38 - 1/8	40 - 7/8	47 - 7/16	71 - 3/4	77	92 - 5/16	14	14
Centerline Flue	I	73 - 1/8	79 - 1/8	95 - 11/16	36 - 3/4	38 - 3/4	44	49	52 - 1/4
Centerline Flue to Side	J	7 - 5/8	8 - 5/16	10 - 11/16	7 - 5/8	8 - 3/8	10 - 11/16	7 - 5/8	8 - 5/16
Centerline Burner to Side	K	13 - 3/4	13 - 9/16	16 - 9/16	13 - 3/4	13 - 9/16	16 - 9/16	-	-
Output BTU/HR		225,000	300,000	400,000	225,000	300,000	400,000	225,000	300,000
Input Oil G.P.H.		2.00	2.50	3.50	2.00	2.50	3.50	2.00	2.50
Nozzle Size		1.65 70 B	2.00 70 A	3.00 60 P	1.65 70 B	2.00 70 B	3.00 60 P	1.65 70 B	2.00 70 B
Pump Pressure		140 PSI	140 PSI	140 PSI	140 PSI	140 PSI	140 PSI	140 PSI	140 PSI
Combustion Efficiency		79.5%	78.0%	78.0%	80.0%	79.5%	79.0%	82.5%	82.-%
Blower Motor ( HP )		3/4	1	1-1/2	3/4	1	1-1/2	3/4	1-1/2
Blower Size		G12x1	G15x1	G18x1	G12x1	G15x1	G18x1	G12x1	G15x1
Belt Size (5L)		46	50	57	47	53	57	47	53
Flue Size		9	10	12	9	10	12	9	10
CFM @ .33 WC ESP		2400	3400	4400	2400	3400	4400	2400	3400
Cooling Capacity (tons)*		6	8.5	11	6	8.5	11	6	8.5
Shipping WT.		725	950	1400	725	950	1400	725	950

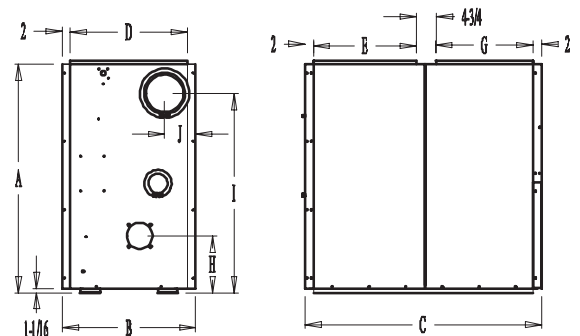
\*Higher cooling capacities are dependent on the application. Dimensions and specifications are subject to change without notice.



HO Series



SO Series



LO Series

## Boyertown Furnace Company

Phone (610) 369-1450 Fax (610) 367-6800

P.O. Box 100, 156 Holly Road,  
 Boyertown, PA 19512